

Economic Transformation at Sasol

Our economic transformation and local content programme has been refocused to align with the shared value approach to integrate all our interventions which deal with economic inclusion. Our aim is to enable economic inclusion and access for small businesses and historically disadvantaged persons (HDPs), to contribute to economic growth, through our economic transformation programme.

Our primary objectives are:

- Identifying and nurturing entrepreneurial talent and capability.
- Accelerate development of transformed SMMEs by:
 - supporting them with relevant resources including funding; and
 - creating meaningful opportunities to enable participation in commercial supply chains, including Sasol's.
- Ensure transformation of our supply chain and apply responsible sourcing and procurement principles.

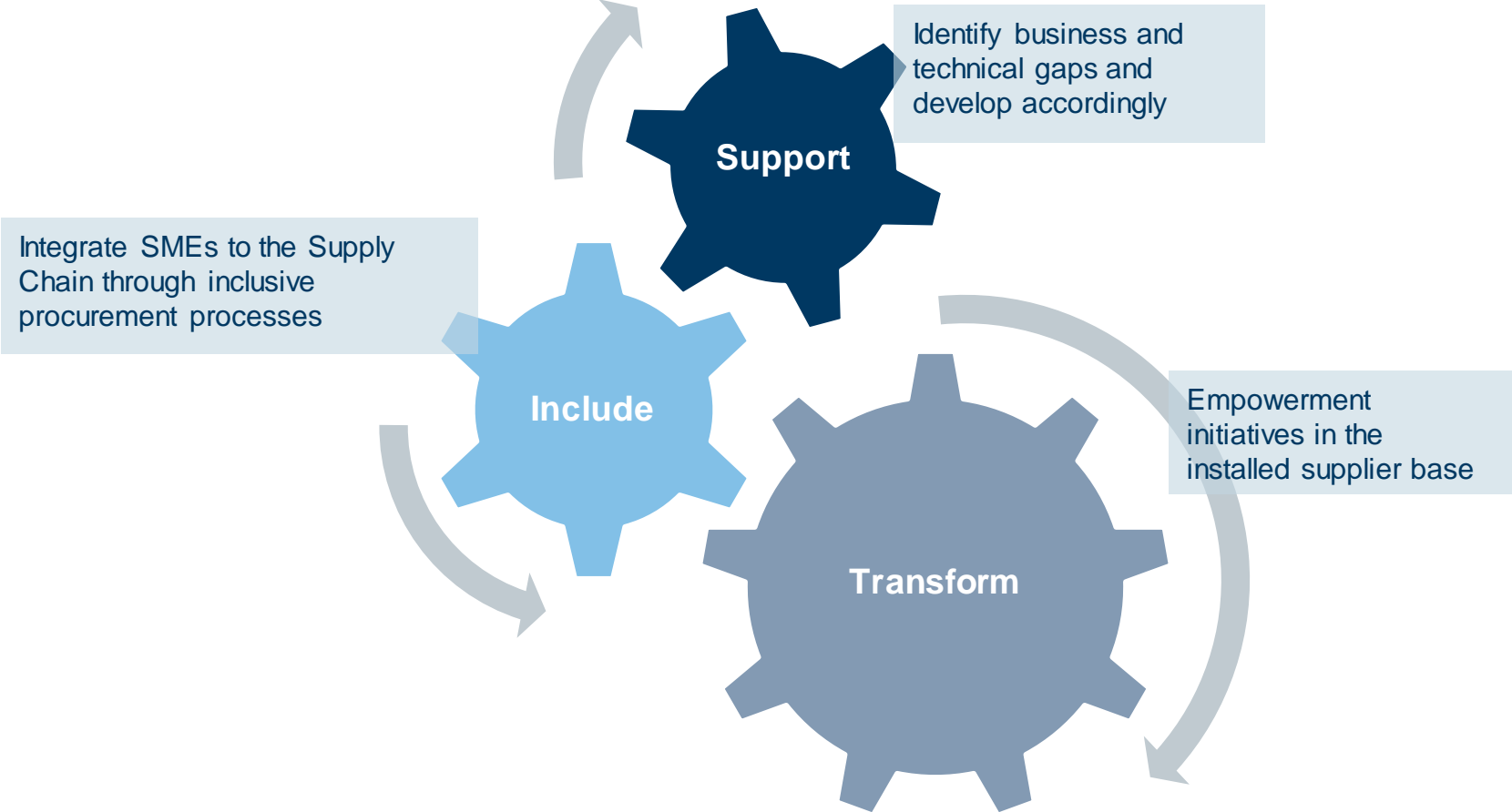
Responsible sourcing and procurement:

The Economic Transformation Programme is enabled and underpinned by the:

- principles of responsible sourcing and procurement:
 - do not support conflict;
 - act in compliance with all legal requirements regarding international control of trade in chemicals; and
 - limit the impacts on human health and the environment.
- zero tolerance approach to any unethical behaviour, bribery and corruption practices in any of our supply chain and sourcing processes to mitigate risks.
- Sasol's core values in how we do business including the Code of Conduct, ESD Policy, Human Rights Policy and labour practices in our operational geographies.

ESD Strategic Objectives

The Sasol ESD strategic objective is to support and include SMEs through the transformation of our procurement processes.



Driving transformation, inclusiveness and SME support



SUPPORT

DEVELOP SMALLER ENTERPRISES



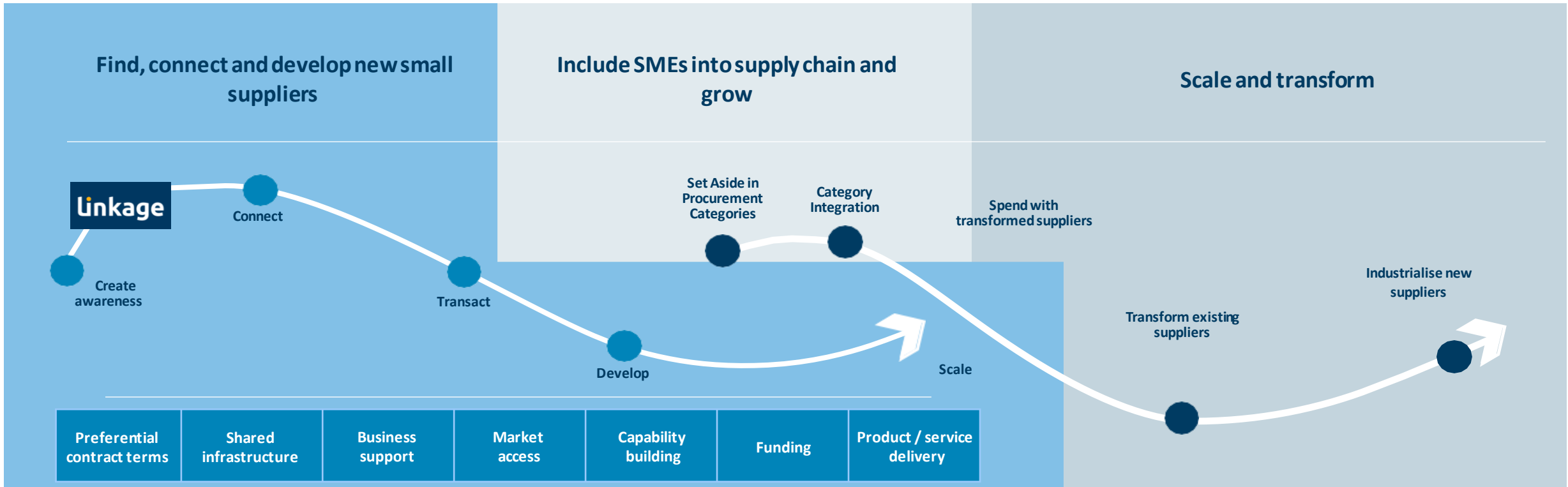
INCLUDE

EMBRACE SMALLER ENTERPRISES



TRANSFORM

DRIVE EMPOWERMENT WITHIN THE SUPPLIER BASE



ESD Strategic Intent: ESD nurtures and grows qualifying small and medium enterprises, by enabling them to scale up into sustainable businesses, through impactful development support and funding, for the betterment of our communities beyond the boundaries of Sasol.

The Sasol Enterprise Development Approach



| Enterprise Development Clusters | Cluster of development interventions | | Activities |
|---------------------------------|--------------------------------------|---|---|
| | Market access | <ul style="list-style-type: none"> To create market access opportunities through participation in industry events and creating visibility of opportunities through digital platform. | <ul style="list-style-type: none"> Masterclasses Exhibition and industry events Digital platform |
| | Product / service development | <ul style="list-style-type: none"> Offer SME access to production / development facilities aligned to Sasol Procurement needs. | <ul style="list-style-type: none"> Incubation hub Business workshops |
| | Business support | <ul style="list-style-type: none"> To offer business support programmes that enhances value for SME | <ul style="list-style-type: none"> Vendor registration support Shared Service Support |
| | Capability building | <ul style="list-style-type: none"> To offer business and technical support aligned with procurement needs | <ul style="list-style-type: none"> Business training Technical events Mentorship and coaching |
| | Business infrastructure | <ul style="list-style-type: none"> To provide hardware and software access to small businesses | <ul style="list-style-type: none"> Secunda small business centre Hot desking in Sasolburg incubation centre. Access to specialized hardware and software |
| | Funding | <ul style="list-style-type: none"> To broaden the funding options for beneficiaries at different development levels. | <ul style="list-style-type: none"> SD loans ED loans ED grants |
| | Preferential terms | <ul style="list-style-type: none"> To offer Preferential terms / conditions for SMEs | <ul style="list-style-type: none"> Contract terms and conditions Payment terms |