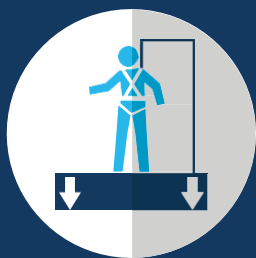


SASOL LIFE SAVING RULES

I choose to comply to our Life Saving Rules



WORKING AT HEIGHTS

To protect the life and ensure the safety of employees who perform work on elevated surfaces.

THE FOLLOWING IS IMPORTANT WHEN WORKING AT HEIGHTS:

Competent people:

- Any team member that is going to be executing work at heights must have completed working at heights training.
- Where applicable, a site specific fall protection plan must be compiled by a competent fall protection plan developer.
- Only competent and trained scaffold builders should erect, dismantle or modify scaffolding.
- Where applicable, lifelines should be installed by a competent installer.

Fit for purpose equipment:

- Harnesses and lanyards must be inspected before use by the user.
- Lifelines must be installed where required and inspected before use.
- Handrails and gratings must be reinstated on elevated platforms after work was completed.

Safe work practices:

- Any team member that is going to be executing work at heights must have completed working at heights training.
- Where applicable, a site specific fall protection plan must be compiled by a competent fall protection plan developer.

Controlled work environment:

- The drop zone should be effectively controlled with barricading, signage and/or the task executor.
- Solid and adequate barricading must be installed where there are gaps in the gratings, floors or where handrails were removed.
- Specially designed scaffolds (e.g. hang scaffolds) must be certified by the relevant engineer on site before the handover certificate can be accepted.
- Kick plates, handrails and knee rails must be installed to prevent objects or people falling from heights.
- Access ladders must be on the inside of all scaffolds which are higher than 2 meters.

NON NEGOTIABLE RULES

These rules should always be applied when work is performed at elevated positions, they are not open for discussion as they are seen as life saving.

- I will remain continuously tied-on where there is a risk of falling (>2m).
- I will make an effort to secure all tools and equipment at heights to prevent it from falling.

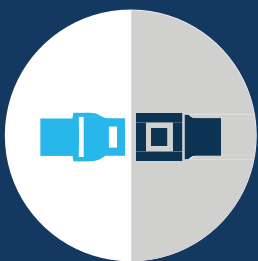


COMMITMENT TO MYSELF AND MY TEAM:

- I will attend all training and take accountability for my own competence to inspect, test, maintain and use my safety harness or fall arrest equipment.
- I will adhere to all working at heights requirements.
- I will report to my manager if I have a medical condition that may place myself or my team members at risk.
- I will only work on approved and safe scaffolding.
- I will use the correct access points when working on a scaffold.
- I will close the trapdoor when I work on a scaffolding platform.

SASOL LIFE SAVING RULES

I choose to comply to our Life Saving Rules



ROAD SAFETY

To protect the life and ensure the safety of employees as pedestrians or as vehicle drivers.

THE FOLLOWING IS IMPORTANT REGARDING ROAD SAFETY:

Competent people:

- Drivers must have a valid driver's license for the specific type of vehicle driven.

Fit for purpose equipment:

- Vehicles must be licensed and road worthy.
- Site vehicles must comply with the necessary inspections and safety requirements.

Safe work practices:

- All equipment hitched to vehicles (e.g. trailers, generators, compressors etc.) must be secured in such a way that it cannot detach while driving.
- Keys to all company vehicles (tractors, mobile cranes, forklifts, light duty vehicles (LDVs) and buses) must be controlled to prevent unauthorised access.
- Vehicle drivers may only use a cell phone while parked in a safe space or through a hands-free device.
- Pedestrians – only use a cell phone while standing still in a safe space.
- Passengers can only be transported on the back of an LDV if it has been designed for safe personnel transport.

NON NEGOTIABLE RULES

These rules should always be applied to keep all road users safe, they are not open for discussion as they are seen as life saving.

- I will keep to the speed limit.
- I will verify that a road is safe to cross before attempting to do so.



COMMITMENT TO MYSELF AND MY TEAM:

- I will adhere to all traffic rules.
- I will adhere to the designated speed limit.
- I will ensure that me and my passengers are always buckled up.
- I will always keep safe following distances.
- I will report reckless and negligent driving.
- I will only overtake when it is permitted and safe to do so.
- I will give right of way and stop, when a pedestrian is busy crossing a road.
- I will only drive a vehicle or operate a mobile crane, forklift etc. when I feel well rested and focused.
- I will only cross the road when it is safe to do so.
- Before crossing a road, I will stop, look right, left and right again for oncoming traffic before I cross.
- I will walk fast but not run, when I cross the road.



PERMIT TO WORK (PtW)

To prevent process safety related incidents while work is performed in operational areas.

THE FOLLOWING IS IMPORTANT REGARDING PERMIT TO WORK:

Competent people:

- Only trained and authorised personnel may issue or receive a permit.
- All team members conducting a task, must understand the process risks involved and how it was eliminated or are being controlled.
- Team members conducting gas tests must be competent.

Fit for purpose equipment:

- Gas monitors must be calibrated, maintained and fit for use.

Safe work practices:

- All process risks must be identified and eliminated or controlled before a permit is issued.
- The equipment and surrounding environment must be made safe before work commences.
- The permit issuer, the permit recipient and the task executor must discuss any hazards that may be introduced during the execution of the task before work commence.
- Positive identification (touch and tag) must be done when any activity requires breaking into the pressure envelope of the process equipment or when there is a risk of loss of containment. This includes a process of identifying cut points on process lines.

Controlled work environment:

- Gas monitoring must be done according to the frequency stipulated on the permit.
- Energy and chemical hazards must be isolated and locked out.
- The location, name and number of equipment to be worked on must be clearly stipulated on the permit.
- Follow first line break procedures on process lines that was made safe to ensure no exposure to team members.

NON NEGOTIABLE RULES

These rules should always be applied when work is conducted under permit to work requirements to keep employees safe while performing work in operational areas, they are not open for discussion as they are seen as life saving.

- I will obtain a permit to work, for non exempted tasks, before starting with work.
- I will only work on equipment that is positively identified (touch and tag).
- I will ensure process isolation is in place as per procedure and safemaking was done as per section 3 of the permit.



COMMITMENT TO MYSELF AND MY TEAM:

Permit issuer

- I will ensure the process hazards are identified, mitigated and communicated to the permit recipient before issuing the permit.
- I will ensure safemaking was conducted as per procedure and equipment positively identified (touch and tag).
- I will ensure that permit requirements remain in place as stated on the permit.

Permit recipient / task executor

- I will obtain the relevant permit to work authorisation before proceeding with any non exempted task in an operational area.
- I will only work with a valid permit where required.
- I will only work on equipment that has been positively identified (touch and tag).
- I will ensure that the number on the tag corresponds with the permit to work number.
- I will communicate permit requirements with other team members who are involved or can be affected by my actions.
- I will remain vigilant to identify hazards that must be mitigated before continuing with the task.
- I will only work on equipment that has been made safe and confirmed to be safe.



LIFTING OPERATIONS

To ensure that mechanical and manual lifting and lowering of equipment can be done safely without causing harm to people or damage to equipment.

THE FOLLOWING IS IMPORTANT WHEN CONDUCTING LIFTING OPERATIONS:

Competent people:

- Team members performing mechanical lifting operations must be trained and declared competent.
- Only riggers with the necessary skill and experience shall conduct critical lifts.
- Crane operators must have the correct license for the type of crane to be operated

Fit for purpose equipment:

- All lifting devices and equipment (e.g. cranes, slings, ropes, shackles etc.) must be registered, inspected, and certified fit for use.
- When making a mechanical connection (D shackle) to a thimble, ensure that it is spliced into the rope.
- All users must do ongoing visual inspections on all lifting devices and equipment for defects.

Safe work practices:

- Ensure that only spliced manila or polypropylene ropes and canvas bags are used when lifting equipment or tools.
- Only use spliced manila ropes and canvas bags to lift or lower equipment up to a maximum of 20kgs.
- Persons performing lifting activities must complete a pre-lift checklist before any lifting activities commence.

Controlled work environment:

- Ensure access to the area is managed and barricaded where it is practically possible.
- Ensure that mobile crane outriggers are fully extended and placed on solid ground with outrigger pads only.

NON NEGOTIABLE RULES

These rules should always be applied when lifting operations are conducted to keep employees safe, they are not open for discussion as they are seen as life saving.

- I will stay clear of the drop zone of suspended loads.
- I will ensure, as task executer, that I keep people clear of the drop zone of suspended loads.

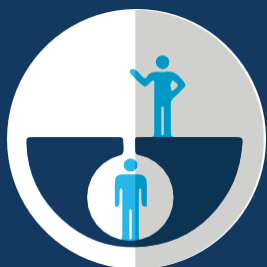


COMMITMENT TO MYSELF AND MY TEAM:

- As a rigger, I will ensure that no person enter under a suspended load.
- I will ensure that I do not touch a suspended load as far as possible, but instead make use of tag lines, guide ropes and push-pull rods to manoeuvre the load.
- I will ensure that the load is within the safe maximum lifting capacity of the lifting equipment.
- I will stop the lift when I struggle to level or stabilise the load and ask for assistance.
- I will ensure that I do not enter an area where lifting operations are being conducted.
- I will respect the barricading and the instructions from the rigger when asked to stay clear of an area where lifting is taking place.

SASOL LIFE SAVING RULES

I choose to comply to our Life Saving Rules



CONTROL CONFINED SPACES

To ensure that team members are not exposed to non-life supporting atmospheres or products that could cause fatalities.

THE FOLLOWING IS IMPORTANT WHEN WORKING IN A CONFINED SPACE:

Competent people:

- Only team members that are trained in the use of an airline mask may perform category B vessel entries.
- The standby must be trained and competent for the type of vessel entry conducted.
- Specialised service providers must be appointed to conduct work in immediate dangerous to life and health (IDLH) atmospheres.
- Team members must have received cable ladder and harness training to make use of a cable ladder in a vessel.

Fit for purpose equipment:

- Ensure all breathing apparatus are inspected and fit for use.
- Ensure safety harnesses are inspected and in a good working condition.

Safe work practices:

- Ensure the airline mask plant feed is locked out to prevent tampering.
- Ensure employees are medically fit to work inside a confined space.
- Ensure that the correct PPE for the task and possible chemical hazards are worn.
- Ensure that gas testing is conducted before work starts and when work is interrupted.
- Monitor for the correct application; oxygen and / or lower explosive limit (LEL) as specified on the permit to work.
- Ensure that there is adequate lighting for the task.
- Ensure work surfaces are cleared from anything that may cause slips or trips.

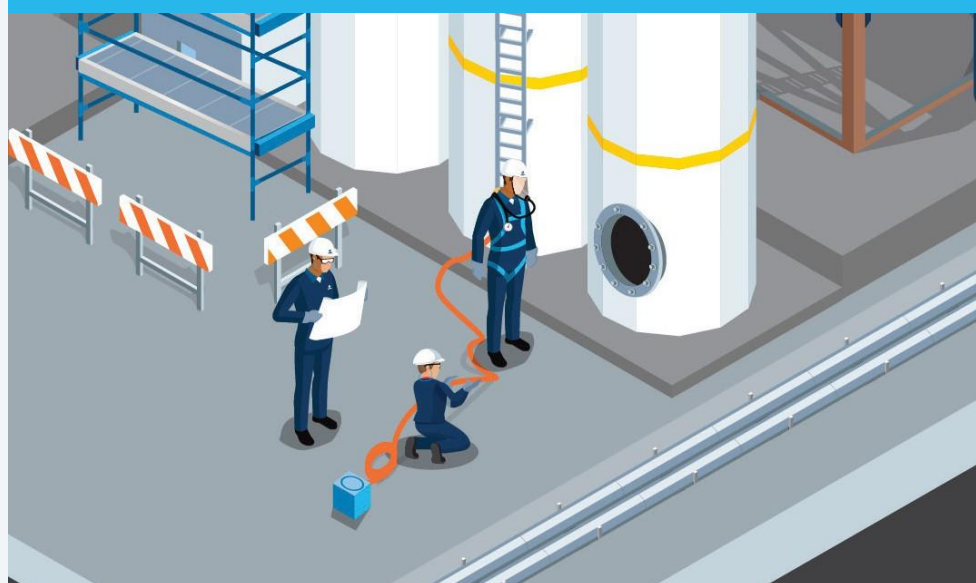
Controlled work environment:

- Control access into a confined space as per requirements (registers or camera systems).
- Positively barricade the entrance to the confined space when no work is being done.
- Ensure that the area around and at the entry point is clear from tripping hazards.
- Ensure that the correct level of standby is at the work site.
- Ensure there are safe access and escape routes.

NON NEGOTIABLE RULE

This rule should always be applied when work must be conducted during vessel entries and in immediate dangerous to life and health atmospheres to keep employees safe, it is not open for discussion as it is seen as life saving.

- I will only enter a confined space under permit conditions.



COMMITMENT TO MYSELF AND MY TEAM:

- I will ensure that I understand the conditions under which work will be done inside confined spaces and IDLH atmospheres.
- I will ensure that I am competent to do the work within a confined space.
- I will ensure that I am medically fit and feel well to work in a confined space.
- I will ensure that I wear the correct PPE to perform work in a confined space.
- I will only enter a confined space when there is a competent standby present.



LOCK-OUT AND ISOLATION

To ensure that employees are not exposed to any electrical or mechanical hazards when performing work.

THE FOLLOWING IS IMPORTANT DURING LOCK-OUT AND ISOLATION:

Competent people:

- Ensure that a competent and authorised person performs lock-out and isolation.
- Only authorised and competent team members shall re-commission equipment.

Fit for purpose equipment:

- Ensure all relevant employees are equipped with approved lockout equipment (locks and tags).

Safe work practices:

- Before starting work on isolated equipment, test to confirm that isolation was effective, and that the equipment is safe to work on.
- Ensure that the correct PPE are used when performing lock-out and isolation tasks and when testing equipment.
- Ensure the lock-out and isolation registers are completed once the task has been completed.

Controlled work environment:

- Ensure adherence to the lock-out and isolation procedure.
- When conducting switching ensure unauthorised personnel are removed from the area.

NON NEGOTIABLE RULE

This rule should always be applied when work must be conducted requiring electrical isolation, it is not open for discussion as it is seen as life saving.

- I will only work on isolated and safe electrical equipment that is locked out.



COMMITMENT TO MYSELF AND MY TEAM:

- I will ensure that I only work on electrical and mechanical process equipment where there is a risk of exposure to energy if:
 - I am trained and competent to do so.
 - I am confident that I can follow the latest lock-out and isolation procedure.
 - I am confident that I will work on the correct equipment.
 - I am confident that it has been made safe.
 - I know the equipment has been identified by an authorised person.
- I will not take a shortcut when conducting lock-out and isolation as I know this will place me and my team members' safety at risk.



PPE (personal protective equipment)

To ensure that team members correctly use, fit and dispose off specialised life preserving PPE.

THE FOLLOWING IS IMPORTANT WHEN USING SPECIALISED LIFE PRESERVING PPE:

Competent people:

- Ensure that Sasol and service provider team members are trained in the correct use, inspection, limitations, storage and maintenance of specialised life preserving PPE.

Fit for purpose equipment:

- Inspect specialised life preserving PPE before work starts to ensure it is in a good condition and fits correctly (e.g. airline masks).

Safe work practices:

- Understand the PPE requirements before starting with a task.
- Ensure the task specific specialised life preserving PPE is identified in the task risk assessment and worn as specified.
- Use the PPE according to the specifications and limitations.

Controlled work environment:

- Dispose of contaminated PPE correctly in contamination bins.
- Only use approved specialised PPE which complies with the relevant quality standards (SABS, ANSI, etc.).

NON NEGOTIABLE RULE

This rule should always be applied when work must be conducted using specialised life preserving PPE, it is not open for discussion as it is seen as life saving.

- I will ensure that I use the specialised life preserving PPE e.g., breathing apparatus, chemical suits and arch flash suit, when specified.



COMMITMENT TO MYSELF AND MY TEAM:

- I will inspect specialised life preserving PPE and ensure it functions correctly before I start with the task.
- I will ensure the specialised life preserving PPE is fitted correctly and worn as per the manufacturer's instructions.
- I will ensure that me and my team use the specialised life preserving PPE when required.



ALCOHOL AND DRUGS

To ensure that team members under the influence of alcohol or drugs are prevented from entering a workplace and performing work or operating any equipment that jeopardizes their safety or that of their team members.

THE FOLLOWING IS IMPORTANT REGARDING ALCOHOL AND DRUGS ON SITE:

Competent people:

- Security personnel must be trained in the correct use of alcohol screening equipment and techniques.
- Medical personnel must be trained in the current use of drug screening equipment and techniques.

Fit for purpose equipment:

- Breathalysers must be calibrated and maintained.

Safe work practices:

- Any trace of alcohol or drugs is prohibited in an employee's system, when the employee reports for duty and/or performs his/her work.

Controlled work environment:

- Team members are urged to disclose the use of prescribed medication to their line managers and the possible adverse effects it could have.
- Drug screening can be done randomly on request of management or at the discretion of a concerned team member.
- After an incident, an employee may be tested for alcohol or drugs.

NON NEGOTIABLE RULE

This rule is to prevent intoxicated team members from entering a workplace and causing injuries or incidents, this is not open for discussion as it is seen as life saving.

- I will only report for duty alcohol and drug free.



COMMITMENT TO MYSELF AND MY TEAM:

- I will not have alcohol or drugs in my possession when I enter Sasol premises.
- I will not buy or sell alcohol or drugs on site.
- I will not use alcohol or drugs while I am on duty.
- If I suspect someone is under the influence of drugs or alcohol, I will report it – someone's life may depend on it.



HEAVY MOBILE EQUIPMENT (HME)

To ensure that team members are not exposed to any hazards when operating or working around HME.

THE FOLLOWING IS IMPORTANT WHEN OPERATING HEAVY MOBILE EQUIPMENT:

Competent people:

- Only licensed and authorised personnel may operate HME

Fit for purpose equipment:

- Ensure all HME are fitted with appropriate brake systems which must be fail safe.
- All HME must be maintained and inspected according to a fixed maintenance schedule.
- HME must be visible and audible (i.e. lights, hooters and reverse alarms).

Safe work practices:

- Pre-use inspections must be conducted on all HME before operation.
- The brakes on HME must be tested by the operator as part of the pre-use inspections.
- All relevant hitching and towing procedures must be followed.

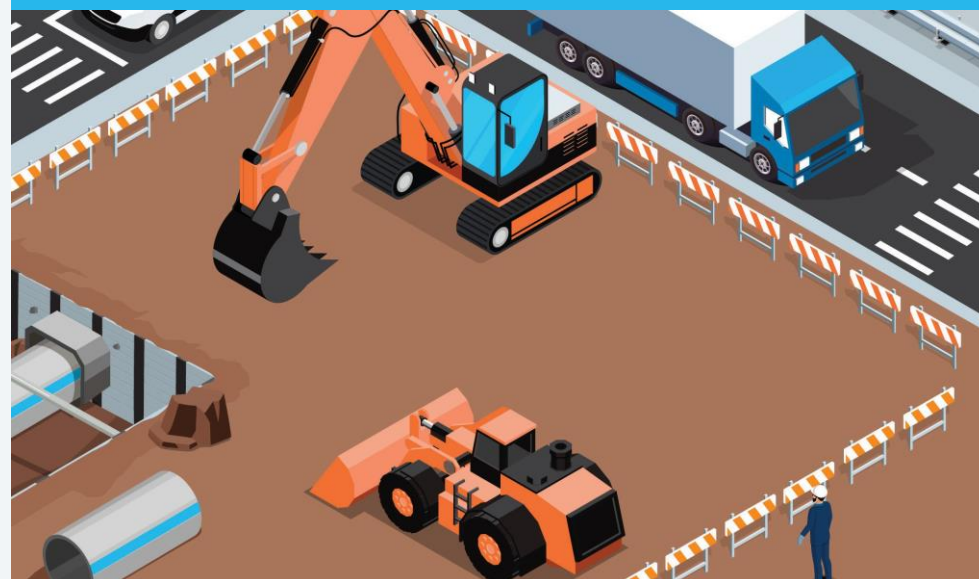
Controlled work environment:

- When not in use, HME must be switched off.
- Ensure relevant emergency response equipment and procedures are in place.

NON NEGOTIABLE RULE

This rule should always be applied when work must be conducted heavy mobile equipment, it is not open for discussion as it is seen as life saving.

- I will keep clear of heavy mobile equipment in operation.



COMMITMENT TO MYSELF AND MY TEAM:

- I will always keep a safe distance away from HME that are in operation.
- I will ensure that me and my team members are aware of movement of HME in the area.
- I will only start operating HME after confirming no person is at risk in the vicinity.



EXCAVATIONS

To ensure that team members are not exposed to any hazards when performing work in and around excavations.

THE FOLLOWING IS IMPORTANT WHEN PERFORMING WORK AROUND EXCAVATIONS:

Competent people:

- Ensure that a competent and authorised person always supervises excavation work

Fit for purpose equipment:

- Ensure that the correct approved types of tools, equipment and machinery are used according to the type of excavation.

Safe work practices:

- All electrical cables, sewage pipes, gas and water pipes must be identified and marked before starting with the excavation.
- Ensure that the relevant excavation permit is obtained before any excavation work may be carried out.

Controlled work environment:

- Excavations must be barricaded appropriately.
Entrance and escape routes must be in place and communicated to everyone.
- Excavation walls must be shored and sloped or mechanically restrained if deeper than 1.5 meters.
- Materials must be kept at least 1 meter away from excavation edges. Special circumstances might require to increase the distance to keep materials away from the edges as indicated by an SME.
- Access and egress must be provided at least every 6 meters.

NON NEGOTIABLE RULE

This rule should always be applied when work must be conducted in excavations, it is not open for discussion as it is seen as life saving.

- I will obtain authorisation and ensure that shoring (if applicable) is in place before entering an excavation.



COMMITMENT TO MYSELF AND MY TEAM:

- I will ensure I always adhere to the excavation permit requirements.
- I will ensure I communicate the excavation permit requirements to all affected personnel.
- I will stop all excavation work immediately if a supervisor gives the order.
- I will always face excavation machinery while it is operational.



IGNITION SOURCES

To ensure ignition sources are controlled to prevent fires and explosions.

THE FOLLOWING IS IMPORTANT WHEN PERFORMING HOT WORK IN CLASSIFIED AREAS:

Fit for purpose equipment:

- Ensure that emergency equipment is maintained, inspected and in good working condition at all times.

Safe work practices:

- Implement and maintain preventative controls for hot work risks introduced by the task and activities in operational facilities.
- Maintain hot work safety conditions and manage the risks of the activity, e.g. cocooning, gas tests, covering of drains, etc.
- Identify, provide and use the correct earth points where equipment needs to be earthed.
- Ensure vehicle access is controlled in classified areas.
- Ensure that all generators are switched off and gas cylinders are closed when not in use.
- Identify prescribed firefighting equipment where applicable.

Controlled work environment:

- Manage and control all hazards where there are ignition sources to prevent combustible materials from igniting. This is applicable to normal and abnormal plant operations, e.g. commissioning or decommissioning activities.

NON NEGOTIABLE RULE

This rule should always be applied when hot work must be conducted in classified areas, it is not open for discussion as it is seen as life saving.

- I will only cut, grind and weld in a classified area with authorisation from the permit issuer.



COMMITMENT TO MYSELF AND TEAM:

- I will ensure I always follow procedures before taking ignition sources into potentially flammable and classified areas.
- I will ensure I am competent, and I have authorisation to perform hot work.
- I will ensure I use the correct tools and equipment for classified areas and make sure that it is in a good condition before using it.
- I will ensure that I smoke in designated areas only.
- I will ensure I implement preventative controls for the hot work risks my task will introduce and I confirm the adequacy thereof.
- I will ensure I monitor the hot work area during the execution of the work with the prescribed firefighting equipment as specified on this permit.
- I will ensure I monitor the hot work area for an adequate period of time after the hot work has been completed and the risk of an ignition source, resulting from the hot work, no longer exists. This includes when hot work is temporarily ceased.